

➤ Notes for parents. Activity next page.

The purpose of this task is to have your child:

- apply their geometric knowledge of two-dimensional and three-dimensional shapes, and their measurement knowledge and practical skills, to make three different containers

Think about this:

- Ensure that the materials are available for your child to use.
- Measurement and geometry are important parts of mathematics as they require students to apply much of the 'number learning' within practical, real and interesting contexts.
- As your child works on each task, encourage them to first describe to you what they will do. Remind them to measure carefully and accurately as they design and create their shapes.
- This task further develops your child's understanding of the relationship between plane (2D) shapes and the faces of 3D shapes, as they design each net fit for purpose.

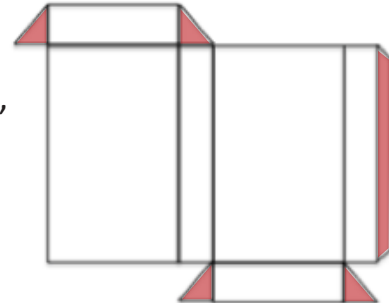
He taura kōrero Māori:

Mēnā ka mārohatia ngā mata o tētahi pouaka kia noho papatahi, ka kīia tērā ko te 'raumata' o te pouaka.	If you unfold or spread out the sides of a box so they lie flat, that is called a 'net' of the box.
Whētuaia te raumata o tētahi pouaka, hei hanga i taua pouaka.	Fold up the net of a box to construct that box.
Kua tāpiria ētahi tīrepa hei whakapiri i ngā mata o te pouaka.	Some tabs/flaps have been added for sticking the faces of the box together.
Tuhia te pūtake o te āhua i te tuatahi. He pēhea nei te āhua o ngā mata e hono ana ki te pūtake.	Draw the base of the shape first. What shape are the faces which connect up to the base.
Huahuatia te raumata i te tuatahi, kātahi ka tuhi i te raumata me te whai anō i ngā inenga e hāngai ana.	Sketch the net first of all, then draw the net with the correct measurements.



He raumata tēnei o tētahi poro tapawhā hāngai. Mēnā ka tapahia tēnei raumata, kātahi ka whētua, ka hua ake te poro tapawhā hāngai.

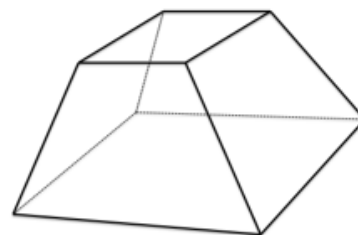
Kua tāpiria ētahi tīrepa hei whakapiri i ngā mata o te pouaka. He whero te tae o ngā tīrepa.



E toru ēnei mahi hanga raumata hei whakaoti māu:

Ngā rauemi ka hiahiatia: he pepa māro, he kutikuti, he pene rākau, he rūri, he kāpia:

1. Hangaia he raumata mō tēnei āhua.
E puare ana te tapawhā rite o runga.
He haurua te rahi o te tapawhā rite o runga i te tapawhā rite o te pūtake.



2. Hangaia he raumata o tētahi pouaka hei kawē i ētahi hēki e rua.
Hangaia te pouaka ka whakamātau ai.



3. Hangaia he raumata o tētahi pouaka hei ipu mō te kotahi rita (1L) waipupuru. Hangaia te pouaka ka whakamātau ai. He ōrite te kotahi rita ki te kotahi mano ritamano, arā, $1L = 1,000mL$.

