

Putting Pens to Paper

You need a classmate

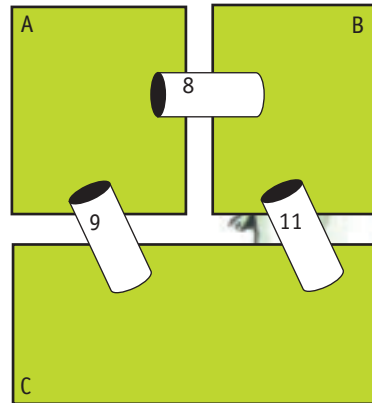
Activity One

1. At Pegasus Peak Zoo, sensors are linked to a computer that keeps a record of how many animals are in each pen. At 10 a.m. on Monday morning, the computer shows that there are:

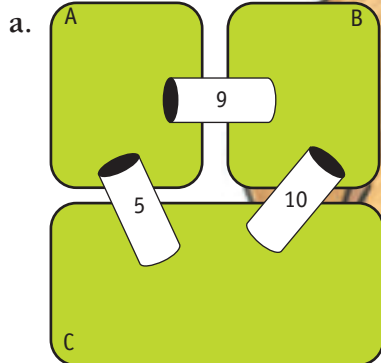
- 8 goats altogether in pens A and B
- 9 goats altogether in pens A and C
- 11 goats altogether in pens B and C.

How many goats are in each pen in the goat enclosure at 10 a.m. on Monday morning?

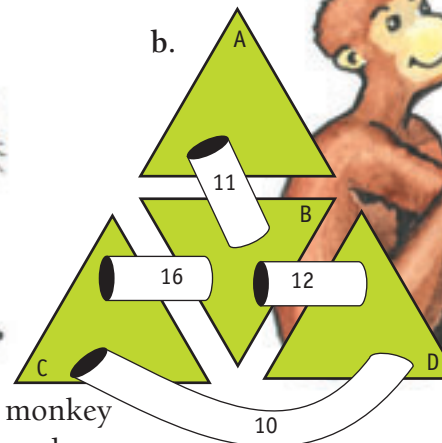
2. Find out how many animals are in each pen of these enclosures at 10 a.m. on Monday morning.



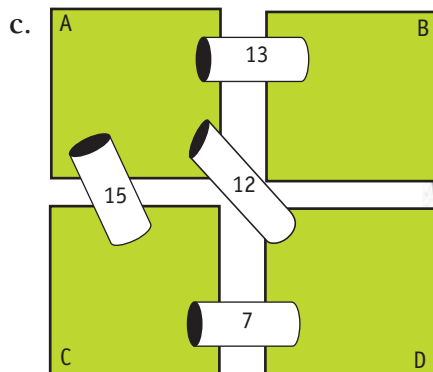
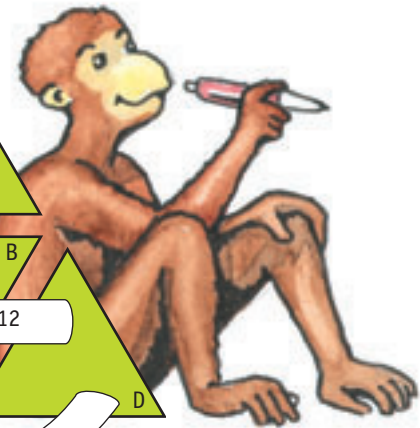
goat enclosure



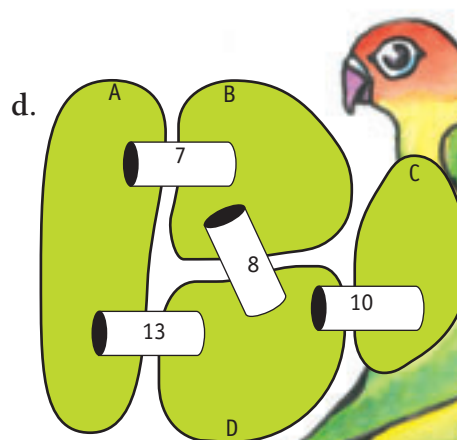
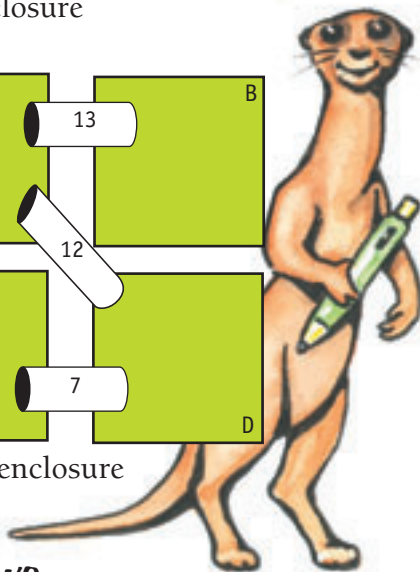
otter enclosure



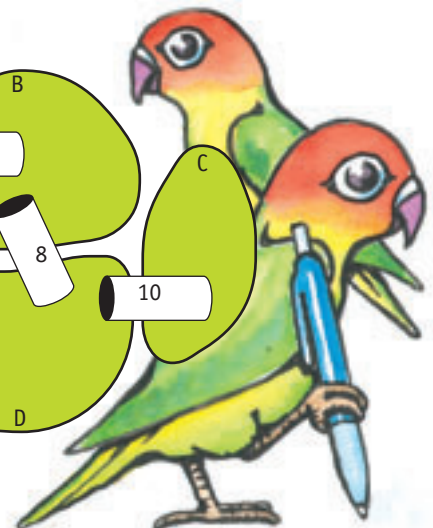
monkey enclosure



meerkat enclosure



bird aviary



Activity Two

Make up an animal pen problem for a classmate to work out.