

# Building Specs

## You need

★ multilink cubes   ★ a classmate

## TECHNOLOGY

When designing a building, architects and engineers typically have to meet specifications relating to size, cost, time, and materials, as well as specifications that relate to how the building looks and functions.

## Activity

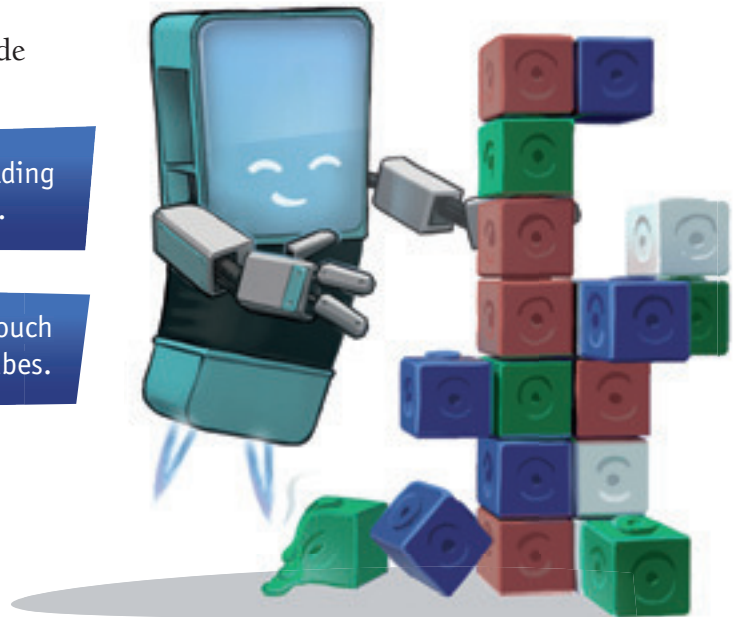
Here are possible specifications for buildings made from multilink cubes:

The building must be made from 9 cubes.

The base of the building must be square.

The building must be 3 levels high.

Every cube must touch at least 2 other cubes.



1.
  - a. Choose three of these specifications and make a building that meets all three.
  - b. Draw side, front, and plan views of your building.
  - c. Show your views to a classmate and ask them to identify which three specifications have been met.
2. Make a building that meets the four specifications.
3. Write up to five specifications for a block building. See if you can make a building that meets these specifications. If so, give the specifications to a classmate and challenge them to create a building that meets them all.

## Focus

Drawing views of three-dimensional structures