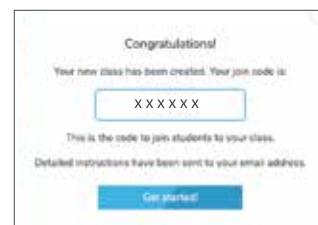


It's simple to create a class on e-ako maths adventures

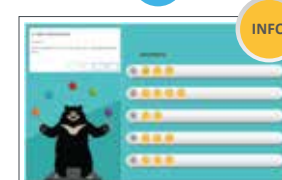


Here's what you do:

1. To access e-ako maths as a teacher, you must log in to your account on www.nzmaths.co.nz. Click on the e-ako link under **Teaching Material**. To learn more about e-ako maths click on the information about e-ako link.
2. The first time you enter e-ako maths you will be asked to confirm your account settings. Enter your first name, surname and email address. Click **Continue**.
3. You will receive a Congratulations message with a join code. This is the code you can give students to join them to your class. You will receive detailed instructions on how to do this by email. Click **Get started**.
4. You will enter the maths adventures landing page. You can access the student pathways or create a new class here. Click **Create new class**.
5. To create a class for your students you will need to enter your school's name or Ministry of Education number. Then choose a name for your class.
6. To add students to your class click on the cog on the top right of the screen and choose **Create users** from the drop-down menu. You can enter student details manually in the table or upload a .csv file.
7. Once set up you will be able to access student pathways, recommend modules to your students, manage your class, check student progress, create summary reports and add additional classes.
8. Student pathways takes you to the learner landing page. Each of the coloured tiles represents an area of maths. Click on one of them to be taken to a pathway of learning for that area. For example, Geometry.
9. All students should complete the "Info" lesson at the top right of each pathway once to familiarise themselves with how to use e-ako. Lessons get harder as you move down the pathway from 1 (easiest) to 5 (hardest).



PLD360
maths adventures



Need help?

There is live chat to offer technical support on the bottom of the homepage on www.nzmaths.co.nz

<https://nzmaths.co.nz/>

nzmaths.