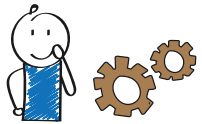
**PROBLEM:**

Write down the investigative question you propose to explore:

Write down what your prediction is, that is what you expect to see when you graph the data and analyse it.

**PLAN AND DATA:**

What variable will you graph? What are the units that the variable is measured in?

**ANALYSIS:**

Make a graph (or graphs) using CODAP to answer your investigative question. Take a screenshot of the graph or graphs and paste in here.

Describe your graph using *I notice* statements.

Things to notice include highest and lowest values, middle value, middle 50%, anything interesting or unusual. Remember to include **variable**, **values**, **units** in your statements in your description.

I notice ...



CONCLUSION:

Answering the investigative question. This will include pulling the best evidence from the analysis.