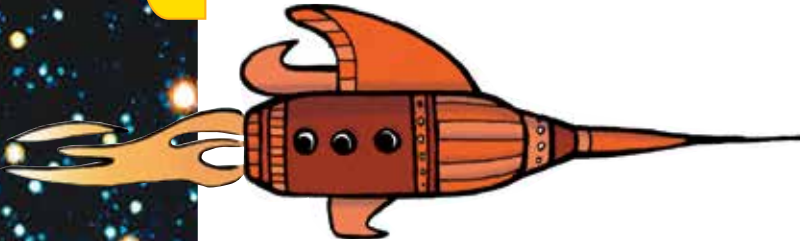


# Zax Tax

## ACTIVITY ONE

On the planet Zozax, salaries are rounded to the nearest thousand zax. Workers pay the same percentage in tax as they earn in thousands, so a worker who earns 5 000 zax pays 5 percent of these earnings in tax. The top officials earn 80 000 zax and have to pay 80 percent in taxes.



40% of 40 000 zax is 16 000 zax!



1. How much is 5 percent of 5 000 zax?
2.
  - a. How much tax do the top officials pay?
  - b. How much do they have left after tax?
3.
  - a. What salary would you have to earn so that you are left with more money than other workers after you have paid your zax tax?
  - b. Explain what happens to salaries that are just above or just below the salary in your answer for a.

## ACTIVITY TWO

1. Planet Hilf is halfway between Earth and Zozax. It has the same money system as Zozax. However, the tax system on Hilf is only half that on Zozax, so a worker who earns 5 000 zax pays only 2.5 percent tax. How much tax is this in zax?
2. An official on Hilf who earns 60 000 zax pays 30 percent tax. How many zax is he left with?
3. What is the maximum salary you can earn on Hilf before you pay more money as tax than you keep? Explain your answer.
4. Draw a table to show what happens to the money you earn if your salary in question 3 increases by:
  - a. 10 000 zax
  - b. 20 000 zax
  - c. 30 000 zax.



New salary	Tax rate	Tax	Your share